

A NEW SPECIES OF *GALACTIA* (FABACEAE) FROM CENTRAL AMERICA

GUY L. NESOM
2925 Hartwood Drive
Fort Worth, Texas 76109
www.guynesom.com

ABSTRACT

Galactia serpentina Nesom, sp. nov., from Honduras has procumbent, non-twining stems and linear-oblong leaflets with glaucous adaxial surfaces. It apparently has no close relative in Central America or Mexico but is most closely similar to *G. pinetorum* Small of southern Florida.

In preparation of the taxonomic treatment of *Galactia* for the Flora of North America North of Mexico, I surveyed collections from Mexico and Central America. A collection from Honduras is distinctive and apparently represents a previously unnamed species.

GALACTIA SERPENTINA Nesom, sp. nov. **TYPE: HONDURAS.** Dept. Copan. Ca. 9 air km NNE of Copan, near lumber road on SE-facing slope, igneous soil, with *Pinus oocarpa* and pyrophytic shrubs, mainly melastomes, infrequent trailing perennial, 14 Jun 1977, J.M. Poole and W.A. Wilson 1073 (holotype: LL!; isotype: LL!).

Similar to *Galactia pinetorum* Small (Florida) in its prostrate habit and linear-oblong leaflets but different in its shorter leaflets with abaxial surfaces glaucous and usually sericeous and shorter rachises and corollas. *Galactia anomala* Lundell (Belize) differs in its twining-climbing habit, solitary, non-pedunculate flowers, and leaflets with attenuate bases.

Stems procumbent, non-twining, not rooting at the nodes, 20–30 inches long, slightly lignescent proximally, sparsely strigose to hirsute-strigose with retrorsely appressed to deflexed hairs. Leaflets 3, petiolulate; petioles 8–17 mm; blades linear-oblong, slightly narrowing distally, 20–32 x 2–7 mm, coriaceous, apices obtuse to rounded, margins slightly but distinctly revolute, strigose-sericeous and glaucous abaxially, minutely strigose adaxially with loosely appressed hairs, margins densely strigose adaxially, veins slightly raised on both surfaces. Rachises 15–40 mm; flowers 3–6, mostly clustered distally. Calyces 4–5 mm, loosely strigose. Corollas 8–9 mm, rose-pink, banner striped. Fruits apparently densely sericeous, mature size not observed.

Known only from the type collection. Figures 1 and 2.

The species apparently most closely similar to *Galactia serpentina* is *G. pinetorum* Small of southern Florida, which also has linear leaves and procumbent, non-twining stems, but *G. pinetorum* has longer, relatively narrower leaflets with non-glaucous, glabrate to sparsely strigillose abaxial surfaces and longer rachises and larger corollas. *Galactia martii* DC. var. *martii* of Brazil also has linear leaves and a prostrate habit but it differs conspicuously from *G. serpentina* in its flowers tightly clustered at the peduncle apex and pendulous, conduplicately folded leaflets (see Burkart 1971). Other *Galactia* species with linear to narrowly oblong leaflets are twining-climbing in habit — e.g., *G. grisebachii* Urb., *G. isopoda* Urb., *G. jenningsii* Britt., *G. longifolia* (Jacq.) Benth, and *G. volubilis* (L.) Britt. sensu Nesom (2015). *Galactia serpentina* has been identified as the Belize endemic *G. anomala* Lundell (see inset, Fig. 1) but the latter has twining stems, solitary, axillary, sessile flowers, and narrowly oblanceolate leaflets with basally attenuate, essentially sessile blades (a feature seen elsewhere in the genus only in *G. gracillima* Benth. of Brazil, Paraguay, and Uruguay).

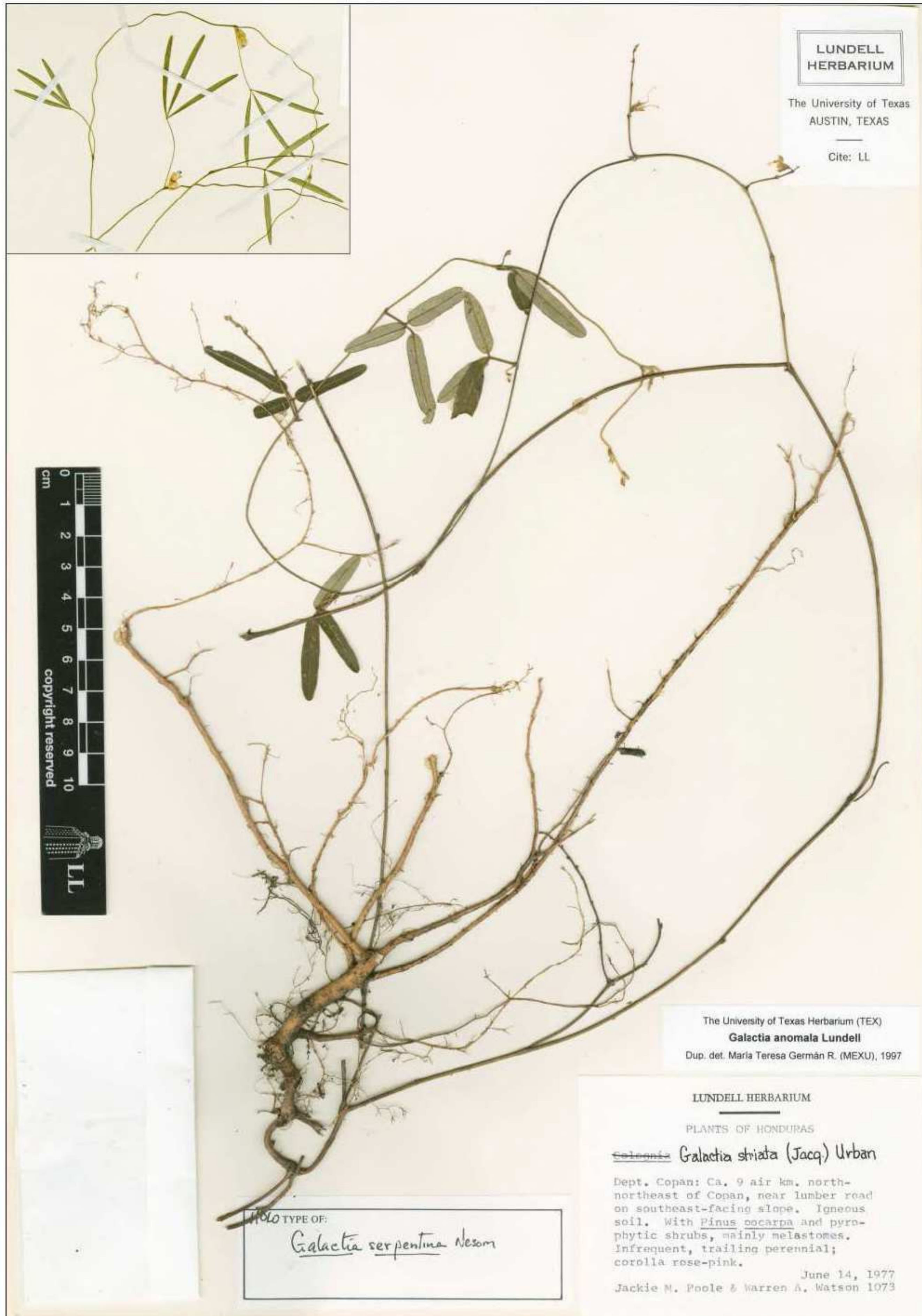


Figure 1. *Galactia serpentina*, holotype. Inset shows portion of *G. anomala* holotype (MICH).

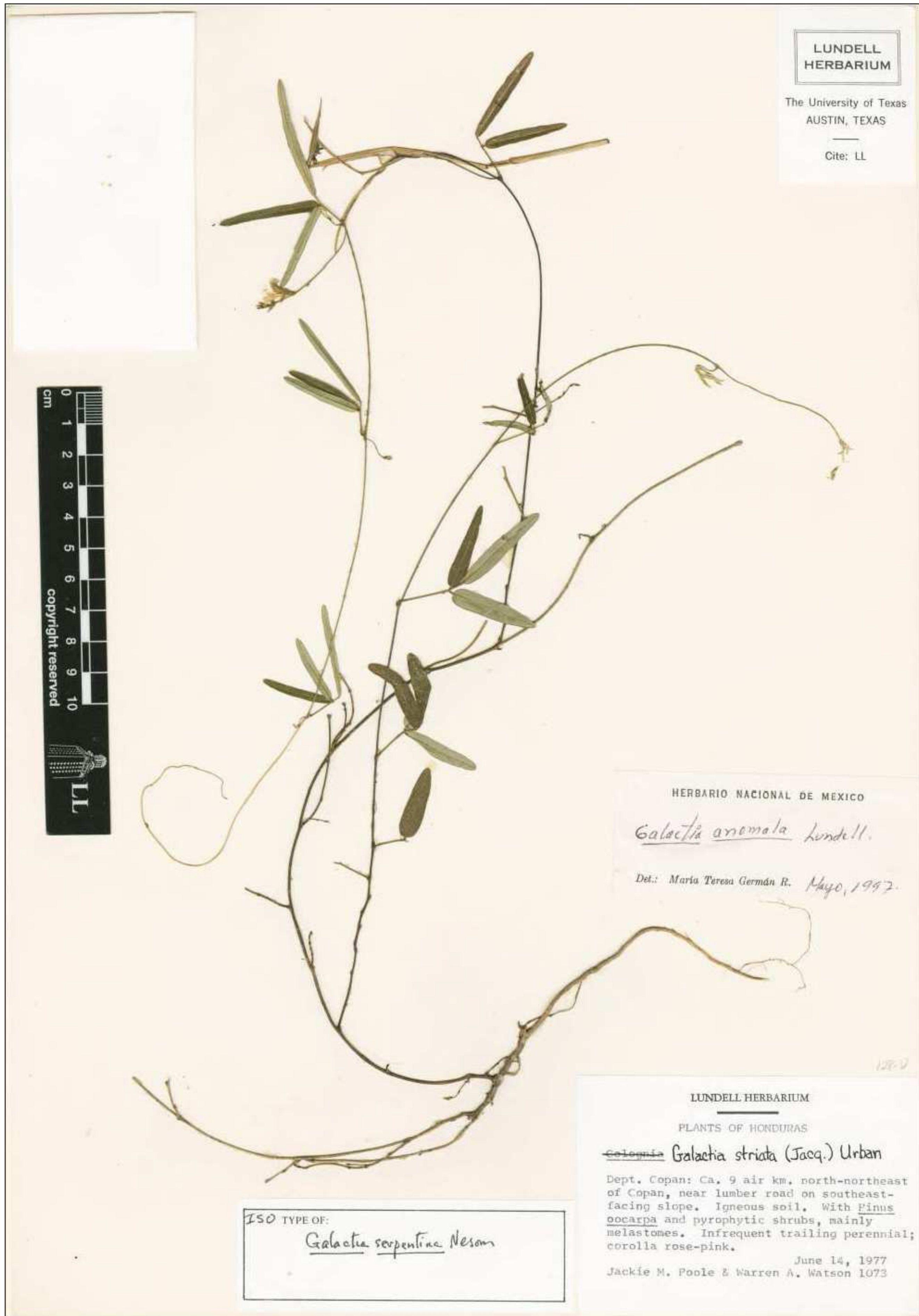


Figure 2. *Galactia serpentina*, isotype.

ACKNOWLEDGEMENTS

I am grateful to the TEX-LL herbarium staff for their help and hospitality during study there, especially to Dr. Tom Wendt, Curator, for providing the photos in Figs. 1 and 2. This study was supported in part by the Flora of North America Association, in conjunction with preparation of the FNA treatment of *Galactia*.

LITERATURE CITED

- Burkart, A. 1971. El género *Galactia* (Legum.-Phaseoleae) en Sudamérica con especial referencia a la Argentina y países vecinos. *Darwiniana* 16: 663–796.
- Nesom, G.L. 2015. Taxonomy of *Galactia* (Fabaceae) in the USA. *Phytoneuron* 2015-42: 1–53.